

SAMPLE COMPUTATION  
Standard Payment Term 2024

Unit:	Queen Suite / Twin Suite
Area:	24.0 sqm
Unit Cost:	8,120,000.00
Fit-out Cost:	2,280,000.00
Total Contract Price:	10,400,000.00

## CASH TERM

Unit Cost:	8,120,000.00	
Less Discount:	1,015,000.00	12.5%
	7,105,000.00	
Less Reservation:	30,000.00	
Net Unit Cost:	7,075,000.00	
Add: Fit-out Cost:	2,280,000.00	
Total Contract Price:	9,355,000.00	

Less: PDC Discount:	3%	243,600.00
Net Unit Cost:		7,876,400.00
Add: Fit-out Cost:		2,280,000.00
Total Contract Price:		10,156,400.00

## OPTION 2

10% Down Payment	787,640.00
Less Reservation Fee:	30,000.00
Net Down Payment	757,640.00
Payable in 3 Months	252,546.67
10% Monthly Amortization	787,640.00
payable in 24 months: (to start with 2nd DP)	32,818.33
80% Balance Upon Turnover	6,301,120.00
Add: Fit-out cost	2,280,000.00
Balance Payable on the 25th month (including Fit-out cost)	8,581,120.00

**NOTE:** Kindly make all checks payable to MEGAWORLD CORP. The reservation fee and/or initial monthly fee is non refundable in case of cancellation or withdrawal by the buyer. Price as of **DECEMBER 2024**. Changes in prices will be disseminated.

1.) Reservation Fee: Php 30,000.00

2.) Discount applicable:

- Can be granted if complete post dated checks are submitted to Megaworld – Treasury **within 15 days from reservation date**. Applicable to all terms with Monthly Amortization (Not applicable to cash term and terms without Monthly Amortization). PDC discount is automatically forfeited if at least one of the cheques submitted has bounced or is replaced.

3.) Megaworld Corp. reserves the right to correct any error that may appear on this computation.

Prepared by:

Brent Matthew Syching | December 8, 2024

Checked by:

Ernest Jagorin | December 8, 2024





## BELMONT HOTEL ILOILO

### TWIN SUITE

24.00 SQM.

**3RD FLOOR** = UNITS 3001, 3003, 3005, 3008, 3009

**3A FLOOR** = UNITS 3A03, 3A04, 3A07, 3A08, 3A11, 3A14, 3A16, 3A19, 3A20, 3A21, 3A23, 3A24, 3A25, 3A27, 3A28, 3A29, 3A31, 3A32, 3A33, 3A35

**5TH FLOOR** = UNITS 5006, 5007, 5010, 5012, 5016, 5017, 5020, 5021, 5024, 5026, 5028, 5031, 5032, 5033, 5035, 5036, 5037, 5039, 5040, 5041, 5043, 5045, 5046, 5047

**6TH FLOOR** = UNITS 6006, 6007, 6010, 6012, 6016, 6017, 6020, 6021, 6024, 6026, 6028, 6031, 6032, 6033, 6035, 6036, 6037, 6039, 6040, 6041, 6043, 6045, 6046, 6047

**7TH FLOOR** = UNITS 7006, 7007, 7010, 7012, 7016, 7017, 7020, 7021, 7024, 7026, 7028, 7031, 7032, 7033, 7035, 7036, 7037, 7039, 7040, 7041, 7043, 7045, 7046, 7047

**8TH FLOOR** = UNITS 8006, 8007, 8010, 8012, 8016, 8017, 8020, 8021, 8024, 8026, 8028, 8031, 8032, 8033, 8035, 8036, 8037, 8039, 8040, 8041, 8043, 8045, 8046, 8047

**9TH FLOOR** = UNITS 9006, 9007, 9010, 9012, 9016, 9017, 9020, 9021, 9024, 9026, 9028, 9031, 9032, 9033, 9035, 9036, 9037, 9039, 9040, 9041, 9043, 9045, 9046, 9047

**10TH FLOOR** = UNITS 1006, 1007, 1010, 1012, 1016, 1017, 1020, 1021, 1024, 1026, 1028, 1031, 1032, 1033, 1035, 1036, 1037, 1039, 1040, 1041, 1043, 1045, 1046, 1047

**11TH FLOOR** = UNITS 1106, 1110, 1114, 1117, 1118, 1121, 1123, 1125, 1128, 1129, 1130, 1132, 1133, 1135, 1137, 1138, 1139, 1141, 1143

**12TH FLOOR** = UNITS 1206, 1210, 1214, 1217, 1218, 1221, 1223, 1225, 1228, 1229, 1230, 1232, 1233, 1235, 1237, 1238, 1239, 1241, 1243

All units are furnished with the furniture and appliances completely listed in the Fit-Out Agreement. Any other furniture, fixture, ornament or detail that may be reflected in the plans has been indicated therein for illustration purposes only and is not included in the sale. The selling price is established principally on a per unit basis and not on the basis of unit measurement or dimension. Sizes and location of structural elements and utility pipe chases are subject to change and may differ from actual deliverable condition.





## BELMONT HOTEL ILOILO

### QUEEN SUITE

**24.00 SQM.**

**3RD FLOOR** = UNITS 3002, 3004, 3006, 3007, 3010, 3011

**3A FLOOR** = UNITS 3A01, 3A02, 3A05, 3A06, 3A09, 3A10, 3A12, 3A15, 3A17, 3A18, 3A22, 3A26, 3A30

**5TH FLOOR** = UNITS 5005, 5008, 5009, 5011, 5014, 5015, 5018, 5019, 5022, 5023, 5025, 5027, 5029, 5030, 5034, 5038, 5042

**6TH FLOOR** = UNITS 6005, 6008, 6009, 6011, 6014, 6015, 6018, 6019, 6022, 6023, 6025, 6027, 6029, 6030, 6034, 6038, 6042

**7TH FLOOR** = UNITS 7005, 7008, 7009, 7011, 7014, 7015, 7018, 7019, 7022, 7023, 7025, 7027, 7029, 7030, 7034, 7038, 7042

**8TH FLOOR** = UNITS 8005, 8008, 8009, 8011, 8014, 8015, 8018, 8019, 8022, 8023, 8025, 8027, 8029, 8030, 8034, 8038, 8042

**9TH FLOOR** = UNITS 9005, 9008, 9009, 9011, 9014, 9015, 9018, 9019, 9022, 9023, 9025, 9027, 9029, 9030, 9034, 9038, 9042

**10TH FLOOR** = UNITS 1005, 1008, 1009, 1011, 1014, 1015, 1018, 1019, 1022, 1023, 1025, 1027, 1029, 1030, 1034, 1038, 1042

**11TH FLOOR** = UNITS 1105, 1108, 1109, 1112, 1115, 1116, 1119, 1120, 1122, 1124, 1126, 1131, 1136, 1140

**12TH FLOOR** = UNITS 1205, 1208, 1209, 1212, 1215, 1216, 1219, 1220, 1222, 1224, 1226, 1231, 1236, 1240

All units are furnished with the furniture and appliances completely listed in the Fit-Out Agreement. Any other furniture, fixture, ornament or detail that may be reflected in the plans has been indicated therein for illustration purposes only and is not included in the sale. The selling price is established principally on a per unit basis and not on the basis of unit measurement or dimension. Sizes and location of structural elements and utility pipe chases are subject to change and may differ from actual deliverable condition.



# BELMONT HOTEL ILOILO

SAMPLE COMPUTATION  
Standard Payment Term 2024

Unit:	.....	<b>Specially Abled Suite</b>
Area:	.....	30.0 sqm
Unit Cost:	.....	<b>10,153,200.00</b>
Fit-out Cost:	.....	<b>2,836,800.00</b>
Total Contract Price:	.....	<b>12,990,000.00</b>

## CASH TERM

Unit Cost:		<b>10,153,200.00</b>	
	Less Discount:	1,269,150.00	12.5%
		<b>8,884,050.00</b>	
	Less Reservation:	30,000.00	
Net Unit Cost:		<b>8,854,050.00</b>	
Add: Fit-out Cost:		<b>2,836,800.00</b>	
Total Contract Price:		<b>11,690,850.00</b>	

Less: PDC Discount:	3%	304,596.00
Net Unit Cost:		<b>9,848,604.00</b>
Add: Fit-out Cost:		<b>2,836,800.00</b>
Total Contract Price:		<b>12,685,404.00</b>

## OPTION 2

10% Down Payment	<b>984,860.40</b>
Less Reservation Fee:	30,000.00
<b>Net Down Payment</b>	<b>954,860.40</b>
Payable in <u>3</u> Months	318,286.80
10% Monthly Amortization	<b>984,860.40</b>
payable in <u>24</u> months: (to start with 2nd DP)	41,035.85
80% Balance Upon Turnover	<b>7,878,883.20</b>
Add: Fit-out cost	<b>2,836,800.00</b>
<b>Balance Payable on the 25th month</b> (including Fit-out cost)	<b>10,715,683.20</b>

**NOTE:** Kindly make all checks payable to MEGAWORLD CORP. The reservation fee and/or initial monthly fee is non refundable in case of cancellation or withdrawal by the buyer. Price as of **DECEMBER 2024**. Changes in prices will be disseminated.

1.) Reservation Fee: Php 30,000.00

2.) Discount applicable:

- Can be granted if complete post dated checks are submitted to Megaworld – Treasury **within 15 days from reservation date**. Applicable to all terms with Monthly Amortization (Not applicable to cash term and terms without Monthly Amortization). PDC discount is automatically forfeited if at least one of the cheques submitted has bounced or is replaced.

3.) Megaworld Corp. reserves the right to correct any error that may appear on this computation.

Prepared by:

Brent Matthew Syching | December 8, 2024

Checked by:

Ernest Jagorin | December 8, 2024





## BELMONT HOTEL ILOILO

### SPECIALLY-ABLED SUITE 30.00 SQM.

5TH FLOOR = UNITS 5004  
6TH FLOOR = UNITS 6004  
7TH FLOOR = UNITS 7004  
8TH FLOOR = UNITS 8004  
9TH FLOOR = UNITS 9004  
10TH FLOOR = UNITS 1004  
11TH FLOOR = UNITS 1104  
12TH FLOOR = UNITS 1204

All units are furnished with the furniture and appliances completely listed in the Fit-Out Agreement. Any other furniture, fixture, ornament or detail that may be reflected in the plans has been indicated therein for illustration purposes only and is not included in the sale. The selling price is established principally on a per unit basis and not on the basis of unit measurement or dimension. Sizes and location of structural elements and utility pipe chases are subject to change and may differ from actual deliverable condition.



# BELMONT HOTEL ILOILO

SAMPLE COMPUTATION  
Standard Payment Term 2024

Unit:	JUNIOR SUITE
Area:	31.0 sqm
Unit Cost:	10,490,400.00
Fit-out Cost:	2,929,600.00
Total Contract Price:	13,420,000.00

## CASH TERM

Unit Cost:	10,490,400.00	
Less Discount:	1,311,300.00	12.5%
	9,179,100.00	
Less Reservation:	30,000.00	
Net Unit Cost:	9,149,100.00	
Add: Fit-out Cost:	2,929,600.00	
Total Contract Price:	12,078,700.00	

Less: PDC Discount:	3%	314,712.00
Net Unit Cost:		10,175,688.00
Add: Fit-out Cost:		2,929,600.00
Total Contract Price:		13,105,288.00

## OPTION 2

10% Down Payment	1,017,568.80
Less Reservation Fee:	30,000.00
Net Down Payment	987,568.80
Payable in 3 Months	329,189.60
10% Monthly Amortization	1,017,568.80
payable in 24 months: (to start with 2nd DP)	42,398.70
80% Balance Upon Turnover	8,140,550.40
Add: Fit-out cost	2,929,600.00
Balance Payable on the 25th month (including Fit-out cost)	11,070,150.40

**NOTE:** Kindly make all checks payable to MEGAWORLD CORP. The reservation fee and/or initial monthly fee is non refundable in case of cancellation or withdrawal by the buyer. Price as of **DECEMBER 2024**. Changes in prices will be disseminated.

1.) Reservation Fee: Php 30,000.00

2.) Discount applicable:

- Can be granted if complete post dated checks are submitted to Megaworld – Treasury **within 15 days from reservation date**. Applicable to all terms with Monthly Amortization (Not applicable to cash term and terms without Monthly Amortization). PDC discount is automatically forfeited if at least one of the cheques submitted has bounced or is replaced.

3.) Megaworld Corp. reserves the right to correct any error that may appear on this computation.

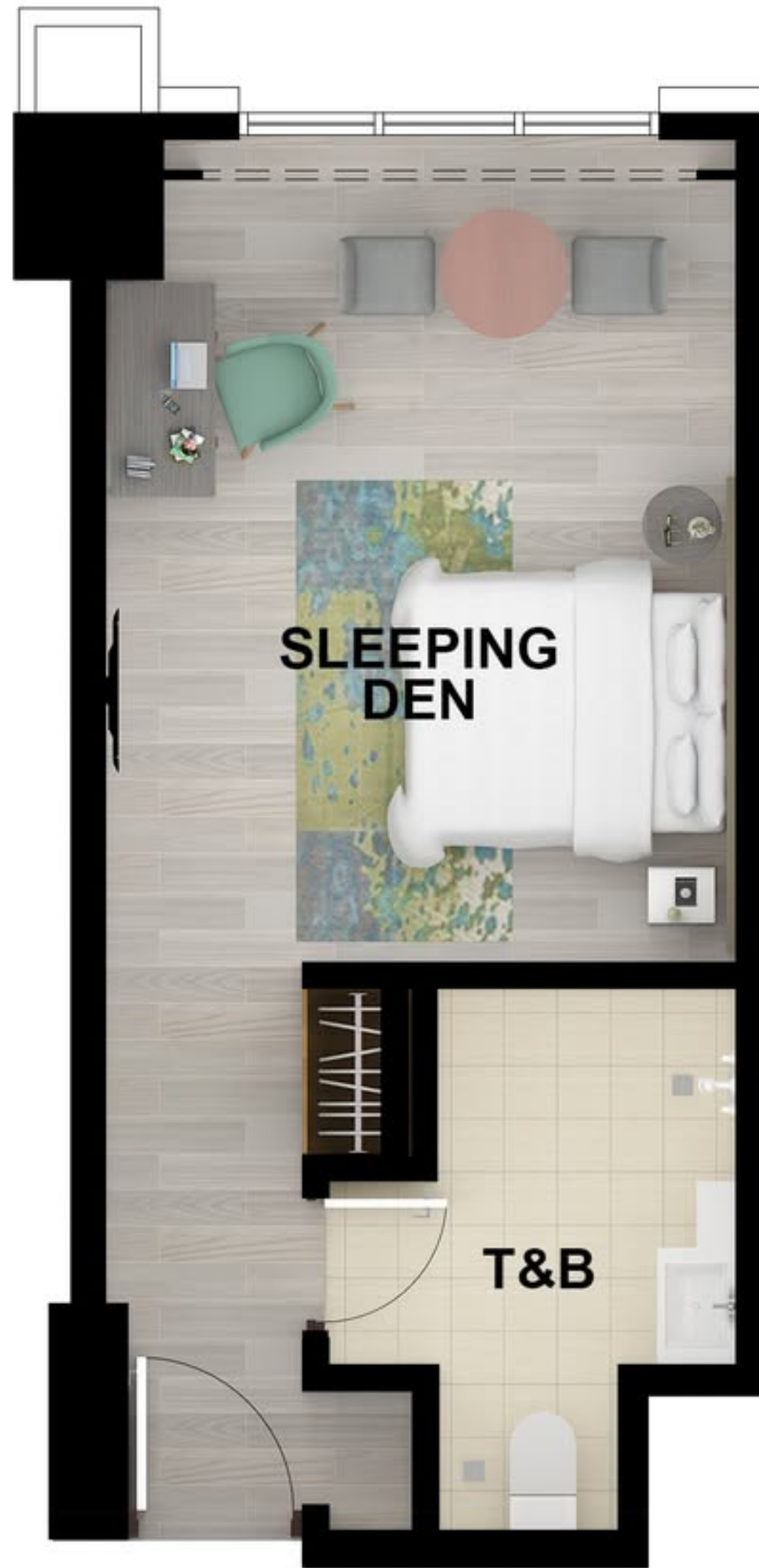
Prepared by:

Brent Matthew Syching | December 8, 2024

Checked by:

Ernest Jagorin | December 8, 2024





## BELMONT HOTEL ILOILO

### JUNIOR SUITE

31.00 SQM.

5TH FLOOR = UNITS 5003  
6TH FLOOR = UNITS 6003  
7TH FLOOR = UNITS 7003  
8TH FLOOR = UNITS 8003  
9TH FLOOR = UNITS 9003  
10TH FLOOR = UNITS 1003  
11TH FLOOR = UNITS 1103  
12TH FLOOR = UNITS 1203

All units are furnished with the furniture and appliances completely listed in the Fit-Out Agreement. Any other furniture, fixture, ornament or detail that may be reflected in the plans has been indicated therein for illustration purposes only and is not included in the sale. The selling price is established principally on a per unit basis and not on the basis of unit measurement or dimension. Sizes and location of structural elements and utility pipe chases are subject to change and may differ from actual deliverable condition.



# BELMONT HOTEL ILOILO

SAMPLE COMPUTATION  
Standard Payment Term 2024

Unit:	Executive Suite
Area:	48.0 sqm
Unit Cost:	17,579,120.00
Fit-out Cost:	3,170,880.00
Total Contract Price:	20,750,000.00

## CASH TERM

Unit Cost:	17,579,120.00	
Less Discount:	2,197,390.00	12.5%
	15,381,730.00	
Less Reservation:	30,000.00	
Net Unit Cost:	15,351,730.00	
Add: Fit-out Cost:	3,170,880.00	
Total Contract Price:	18,522,610.00	

Less: PDC Discount:	3%	527,373.60
Net Unit Cost:		17,051,746.40
Add: Fit-out Cost:		3,170,880.00
Total Contract Price:		20,222,626.40

## OPTION 2

10% Down Payment	1,705,174.64
Less Reservation Fee:	30,000.00
<b>Net Down Payment</b>	<b>1,675,174.64</b>
Payable in 3 Months	558,391.55
10% Monthly Amortization	1,705,174.64
payable in 24 months: (to start with 2nd DP)	71,048.94
80% Balance Upon Turnover	13,641,397.12
Fit-out cost	3,170,880.00
<b>Balance Payable on the 25th month</b> (including Fit-out cost)	<b>16,812,277.12</b>

**NOTE:** Kindly make all checks payable to MEGAWORLD CORP. The reservation fee and/or initial monthly fee is non refundable in case of cancellation or withdrawal by the buyer. Price as of **DECEMBER 2024**. Changes in prices will be disseminated.

1.) Reservation Fee: Php 30,000.00

2.) Discount applicable:

- Can be granted if complete post dated checks are submitted to Megaworld – Treasury **within 15 days from reservation date**. Applicable to all terms with Monthly Amortization (Not applicable to cash term and terms without Monthly Amortization). PDC discount is automatically forfeited if at least one of the cheques submitted has bounced or is replaced.

3.) Megaworld Corp. reserves the right to correct any error that may appear on this computation.

Prepared by:

Brent Matthew Syching | December 8, 2024

Checked by:

Ernest Jagorin | December 8, 2024





## BELMONT HOTEL ILOILO

### EXECUTIVE SUITE 48.00 SQM.

11TH FLOOR = UNITS 1107, 1111, 1127, 1134  
12TH FLOOR = UNITS 1207, 1211, 1227, 1234

All units are furnished with the furniture and appliances completely listed in the Fit-Out Agreement. Any other furniture, fixture, ornament or detail that may be reflected in the plans has been indicated therein for illustration purposes only and is not included in the sale. The selling price is established principally on a per unit basis and not on the basis of unit measurement or dimension. Sizes and location of structural elements and utility pipe chases are subject to change and may differ from actual deliverable condition.



# BELMONT HOTEL ILOILO

SAMPLE COMPUTATION  
Standard Payment Term 2024

Unit:	Executive Suite
Area:	53.0 sqm
Unit Cost:	19,660,240.00
Fit-out Cost:	3,249,760.00
Total Contract Price:	22,910,000.00

## CASH TERM

Unit Cost:	19,660,240.00	
Less Discount:	2,457,530.00	12.5%
	17,202,710.00	
Less Reservation:	30,000.00	
Net Unit Cost:	17,172,710.00	
Add: Fit-out Cost:	3,249,760.00	
Total Contract Price:	20,422,470.00	

Less: PDC Discount:	3%	589,807.20
Net Unit Cost:		19,070,432.80
Add: Fit-out Cost:		3,249,760.00
Total Contract Price:		22,320,192.80

## OPTION 2

10% Down Payment	1,907,043.28
Less Reservation Fee:	30,000.00
Net Down Payment	1,877,043.28
Payable in 3 Months	625,681.09
10% Monthly Amortization	1,907,043.28
payable in 24 months: (to start with 2nd DP)	79,460.14
80% Balance Upon Turnover	15,256,346.24
Fit-out cost	3,249,760.00
Balance Payable on the 25th month (including Fit-out cost)	18,506,106.24

**NOTE:** Kindly make all checks payable to MEGAWORLD CORP. The reservation fee and/or initial monthly fee is non refundable in case of cancellation or withdrawal by the buyer. Price as of DECEMBER 2024. Changes in prices will be disseminated.

1.) Reservation Fee: Php 30,000.00

2.) Discount applicable:

- Can be granted if complete post dated checks are submitted to Megaworld – Treasury **within 15 days from reservation date**. Applicable to all terms with Monthly Amortization (Not applicable to cash term and terms without Monthly Amortization). PDC discount is automatically forfeited if at least one of the cheques submitted has bounced or is replaced.

3.) Megaworld Corp. reserves the right to correct any error that may appear on this computation.

Prepared by:

Brent Matthew Syching | December 8, 2024

Checked by:

Ernest Jagorin | December 8, 2024





## BELMONT HOTEL ILOILO

### EXECUTIVE SUITE

53.00 SQM.

5TH FLOOR = UNITS 5001  
6TH FLOOR = UNITS 6001  
7TH FLOOR = UNITS 7001  
8TH FLOOR = UNITS 8001  
9TH FLOOR = UNITS 9001  
10TH FLOOR = UNITS 1001  
11TH FLOOR = UNITS 1101  
12TH FLOOR = UNITS 1201

All units are furnished with the furniture and appliances completely listed in the Fit-Out Agreement. Any other furniture, fixture, ornament or detail that may be reflected in the plans has been indicated therein for illustration purposes only and is not included in the sale. The selling price is established principally on a per unit basis and not on the basis of unit measurement or dimension. Sizes and location of structural elements and utility pipe chases are subject to change and may differ from actual deliverable condition.



# BELMONT HOTEL ILOILO

SAMPLE COMPUTATION  
Standard Payment Term 2024

Unit:	Executive Suite
Area:	52.0 sqm
Unit Cost:	19,280,560.00
Fit-out Cost:	3,189,440.00
Total Contract Price:	22,470,000.00

## CASH TERM

Unit Cost:	19,280,560.00	
Less Discount:	2,410,070.00	12.5%
	16,870,490.00	
Less Reservation:	30,000.00	
Net Unit Cost:	16,840,490.00	
Add: Fit-out Cost:	3,189,440.00	
Total Contract Price:	20,029,930.00	

Less: PDC Discount:	3%	578,416.80
Net Unit Cost:		18,702,143.20
Add: Fit-out Cost:		3,189,440.00
Total Contract Price:		21,891,583.20

## OPTION 2

10% Down Payment	1,870,214.32
Less Reservation Fee:	30,000.00
Net Down Payment	1,840,214.32
Payable in 3 Months	613,404.77
10% Monthly Amortization	1,870,214.32
payable in 24 months: (to start with 2nd DP)	77,925.60
80% Balance Upon Turnover	14,961,714.56
Fit-out cost	3,189,440.00
Balance Payable on the 25th month (including Fit-out cost)	18,151,154.56

**NOTE:** Kindly make all checks payable to MEGAWORLD CORP. The reservation fee and/or initial monthly fee is non refundable in case of cancellation or withdrawal by the buyer. Price as of DECEMBER 2024. Changes in prices will be disseminated.

1.) Reservation Fee: Php 30,000.00

2.) Discount applicable:

- Can be granted if complete post dated checks are submitted to Megaworld – Treasury **within 15 days from reservation date**. Applicable to all terms with Monthly Amortization (Not applicable to cash term and terms without Monthly Amortization). PDC discount is automatically forfeited if at least one of the cheques submitted has bounced or is replaced.

3.) Megaworld Corp. reserves the right to correct any error that may appear on this computation.

Prepared by:

Brent Matthew Syching | December 8, 2024

Checked by:

Ernest Jagorin | December 8, 2024





## BELMONT HOTEL ILOILO

### EXECUTIVE SUITE 52.00 SQM.

3A FLOOR = UNITS 3A34  
 5TH FLOOR = UNITS 5002, 5048  
 6TH FLOOR = UNITS 6002, 6048  
 7TH FLOOR = UNITS 7002, 7048  
 8TH FLOOR = UNITS 8002, 8048  
 9TH FLOOR = UNITS 9002, 9048  
 10TH FLOOR = UNITS 1002, 1048  
 11TH FLOOR = UNITS 1102, 1142  
 12TH FLOOR = UNITS 1202, 1242

All units are furnished with the furniture and appliances completely listed in the Fit-Out Agreement. Any other furniture, fixture, ornament or detail that may be reflected in the plans has been indicated therein for illustration purposes only and is not included in the sale. The selling price is established principally on a per unit basis and not on the basis of unit measurement or dimension. Sizes and location of structural elements and utility pipe chases are subject to change and may differ from actual deliverable condition.